

**35T Volvo Zero Swing Multipurpose Excavators**



**Specifications**

Weight Range	35-40T depending on set up configurations
Track Length	4946mm
Track Width	850mm
Max reach	10m – 12m depending on machine boom configuration
Counterweight overhang	200mm

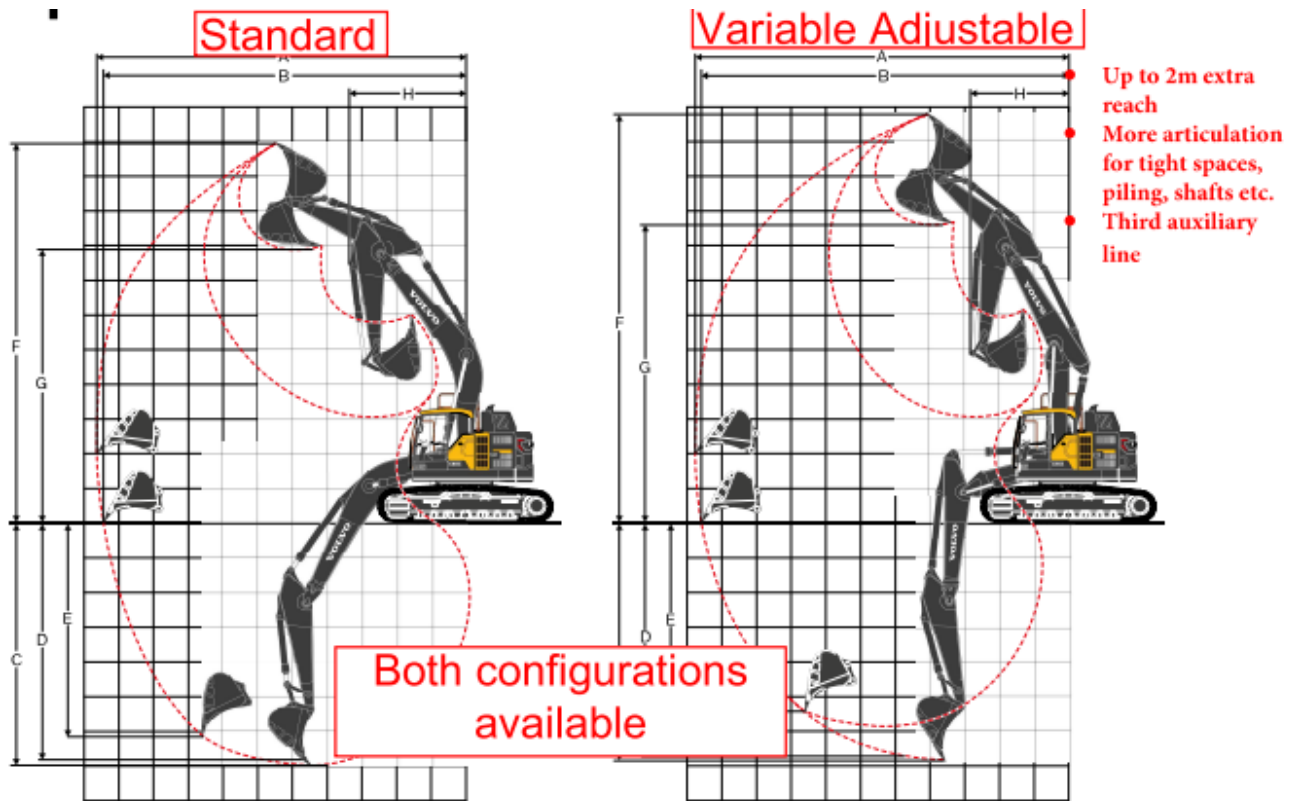
**Operating features**

Largest zero swing excavator on the market
No tail swing for working in tight and or congested work environments and increased safety
Dual pumps to run 3 auxiliary lines for different attachments
Dozer blade for more stability, optimised earth moving and road levelling, increased lifting capacity and further reach
3D GPS
Weigh loader
Tilt rotator

**Working radius and attachments**

Attachments	Radius
Digging bucket 1.5m <sup>3</sup>	10-12m
Tilt bucket 2m <sup>3</sup>	10-12m
Tele-dipper 0-30m deep	5m
Rotating Rock/Block Grab	10-12m
PVE 2319 vibratory hammer	8m sheet pile
Muller vibrator hammer	12m sheet pile/UC
65 kN Auger Drive	0-12m radius, 2m dia flight 25m deep
6m Long reach extension for dredging	0-18m
4m crane extension beak	0-16m
DX25 drop hammer	0-7m
Pulveriser	0-10m
Demolition processor	0-10m
1.5m <sup>3</sup> Concrete skip	0-12m
Sand pump	0-16m
Movax side grab vibro	0-10m





**WORKING RANGES**

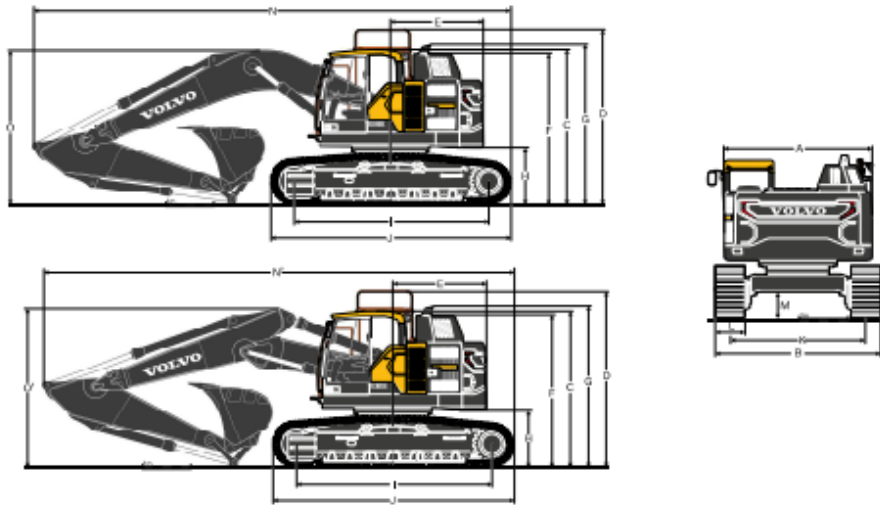
Description	Unit	ECR355E											
		6.2 m (20'4") mono boom						6.2 m (20'4") 2-piece boom					
Boom		2.55	8'4"	3.05	10'0"	3.7	12'2"	2.55	8'4"	3.05	10'0"	3.7	12'2"
A. Max. digging reach	mm ft in	10,110 33'2"	10,635 34'11"	11,240 36'11"	11,065 36'4"	10,009 32'10"	10,550 34'7"	11,175 36'8"	10,211 33'6"	10,741 35'3"	11,356 37'3"	11,175 36'8"	10,009 32'10"
B. Max. digging reach on ground	mm ft in	9,905 32'6"	10,445 34'3"	11,065 36'4"	10,009 32'10"	10,550 34'7"	11,175 36'8"	10,211 33'6"	10,741 35'3"	11,356 37'3"	11,175 36'8"	10,009 32'10"	10,550 34'7"
C. Max. digging depth	mm ft in	6,460 21'2"	6,960 22'10"	7,610 24'12"	6,293 20'8"	6,818 22'4"	7,460 24'6"	6,190 20'4"	6,721 22'1"	7,370 24'2"	7,460 24'6"	6,190 20'4"	6,721 22'1"
D. Max. digging depth (l=2.44 m, 8'0" level)	mm ft in	6,260 20'6"	6,795 22'4"	7,465 24'6"	6,190 20'4"	6,721 22'1"	7,370 24'2"	6,190 20'4"	6,721 22'1"	7,370 24'2"	7,460 24'6"	6,190 20'4"	6,721 22'1"
E. Max. vertical wall digging depth	mm ft in	5,600 18'4"	6,130 20'1"	6,755 22'2"	4,796 15'9"	5,384 17'8"	5,974 19'7"	5,600 18'4"	6,130 20'1"	6,755 22'2"	4,796 15'9"	5,384 17'8"	5,974 19'7"
F. Max. cutting height	mm ft in	10,455 34'4"	10,915 35'10"	11,285 37'0"	11,268 36'12"	11,773 38'8"	12,240 40'2"	10,455 34'4"	10,915 35'10"	11,285 37'0"	11,268 36'12"	11,773 38'8"	12,240 40'2"
G. Max. dumping height	mm ft in	7,435 24'5"	7,855 25'9"	8,230 27'0"	8,101 26'7"	8,577 28'2"	9,046 29'8"	7,435 24'5"	7,855 25'9"	8,230 27'0"	8,101 26'7"	8,577 28'2"	9,046 29'8"
H. Min. front swing radius	mm ft in	3,285 10'9"	3,365 11'0"	3,340 10'11"	2,988 9'10"	2,747 9'0"	2,913 9'7"	3,285 10'9"	3,365 11'0"	3,340 10'11"	2,988 9'10"	2,747 9'0"	2,913 9'7"

**DIGGING FORCES WITH DIRECT FIT BUCKET**

Bucket capacity		l	gal	1,270	335	1,270	335	1,270	335	1,270	335	1,270	335	1,270	335
Breakout force (bucket)	Normal	SAE J1179	kN lbf	165 37,093	165 37,093	165 37,093	165 37,093	165 37,093	165 37,093	165 37,093	165 37,093	165 37,093	165 37,093	165 37,093	165 37,093
	Power boost	SAE J1179	kN lbf	179 40,241	179 40,241	179 40,241	179 40,241	179 40,241	179 40,241	179 40,241	179 40,241	179 40,241	179 40,241	179 40,241	179 40,241
	Normal	ISO 6015	kN lbf	192 43,163	192 43,163	192 43,163	192 43,163	192 43,163	192 43,163	192 43,163	192 43,163	192 43,163	192 43,163	192 43,163	192 43,163
	Power boost	ISO 6015	kN lbf	209 46,985	209 46,985	209 46,985	209 46,985	209 46,985	209 46,985	209 46,985	209 46,985	209 46,985	209 46,985	209 46,985	209 46,985
Tearout force (arm)	Normal	SAE J1179	kN lbf	148.9 33,474	133.0 29,900	116.8 26,258	148.9 33,474	133.0 29,900	116.8 26,258	148.9 33,474	133.0 29,900	116.8 26,258	148.9 33,474	133.0 29,900	116.8 26,258
	Power boost	SAE J1179	kN lbf	161.2 36,239	144.0 32,372	126.4 28,416	161.2 36,239	144.0 32,372	126.4 28,416	161.2 36,239	144.0 32,372	126.4 28,416	161.2 36,239	144.0 32,372	126.4 28,416
	Normal	ISO 6015	kN lbf	152.3 34,238	136.0 30,574	119.4 26,842	152.3 34,238	136.0 30,574	119.4 26,842	152.3 34,238	136.0 30,574	119.4 26,842	152.3 34,238	136.0 30,574	119.4 26,842
	Power boost	ISO 6015	kN lbf	165.7 37,251	148.0 33,272	129.9 29,203	165.7 37,251	148.0 33,272	129.9 29,203	165.7 37,251	148.0 33,272	129.9 29,203	165.7 37,251	148.0 33,272	129.9 29,203
Rotation angle, bucket		deg		179	179	179	179	179	179	179	179	179	179	179	







**DIMENSIONS**

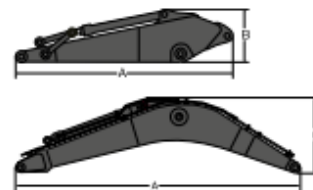
Description	Unit	ECR355EL					
Boom		6.2 m (20'4") mono boom or 6.2 m (20'4") 2-piece boom					
Arm	m ft in	2.55	8'4"	3.05	10'0"	3.7	12'2"
A. Overall width of upper structure	mm ft in	2,990	9'10"	2,990	9'10"	2,990	9'10"
B. Overall width	mm ft in	3,500	11'6"	3,500	11'6"	3,500	11'6"
C. Overall height of cab	mm ft in	3,200	10'6"	3,200	10'6"	3,200	10'6"
D. Overall height of guardrail (Unfolded)	mm ft in	3,615	11'10"	3,615	11'10"	3,615	11'10"
E. Tail swing radius	mm ft in	1,900	6'3"	1,900	6'3"	1,900	6'3"
F. Overall height of engine hood	mm ft in	3,110	10'2"	3,110	10'2"	3,110	10'2"
G. Overall height of diffuser	mm ft in	3,300	10'10"	3,300	10'10"	3,300	10'10"
H. Counterweight clearance *	mm ft in	1,160	3'10"	1,160	3'10"	1,160	3'10"
I. Tumbler length	mm ft in	4,020	13'2"	4,020	13'2"	4,020	13'2"
J. Track length	mm ft in	4,946	16'3"	4,946	16'3"	4,946	16'3"
K. Track gauge	mm ft in	2,740	9'0"	2,740	9'0"	2,740	9'0"
L. Shoe width	mm ft in	850	2'10"	850	2'10"	850	2'10"
M. Min. ground clearance *	mm ft in	500	1'8"	500	1'8"	500	1'8"
N. Overall length	mm ft in	9,950	32'8"	9,865	32'4"	9,890	32'5"
N'. Overall length	mm ft in	9,948	32'8"	9,883	32'5"	9,878	32'5"
O. Overall height of boom	mm ft in	3,445	11'4"	3,305	10'10"	3,550	11'8"
O'. Overall height of boom	mm ft in	3,355	11'0"	3,300	10'10"	3,530	11'7"

2-piece boom  
\* Without shoe grouser

**DIMENSIONS / Boom and arm**

Description	Unit	Boom				Arm					
		HD		2-piece		HD		GP			
	m ft in	6.2	20'4"	6.2	20'4"	2.55	8'4"	3.05	10'0"	3.7	12'2"
A. Length	mm ft in	6,430	21'1"	6,427	21'1"	3,710	12'2"	4,150	13'7"	4,900	16'1"
B. Height	mm ft in	1,680	5'6"	1,490	4'11"	1,010	3'4"	1,010	3'4"	1,050	3'5"
Width	mm ft in	770	2'6"	770	2'6"	545	1'9"	545	1'9"	545	1'9"
Weight	kg lb	2,480	5,467	2,808	6,191	1,475	3,252	1,540	3,395	1,680	3,704

Boom: Includes cylinder, piping and pin, excludes boom cyl. Pin  
Arm: Includes cylinder, linkage and pin



**DIMENSIONS / Dozer blade**

Description	Unit			
A. Height	mm	ft in	744	
Width Dozer Blade	mm	ft in	3,340	
Weight	kg	lb	1,985	
B. Lift height	mm	ft in	623	
C. Digging depth	mm	ft in	668	

